

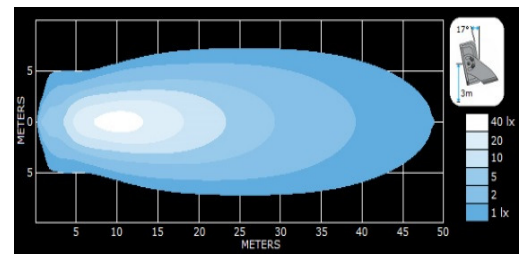
## FEATURES

- ✓ Designed for mining and industrial applications
- ✓ Ingress protection IP68 rated
- ✓ Tempered glass lens
- ✓ Deutsch connector
- ✓ Built in thermal management
- ✓ No radio frequency interference

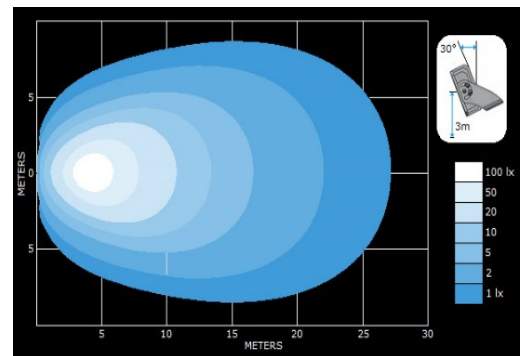


## SPECIFICATIONS

<b>Part Numbers</b>	Spot – SX62-0646 Flood – SX62-0647																									
<b>Light Source</b>	Single 12 Array of CREE XM-L2 diodes																									
<b>LED Options</b>	Spot and Flood																									
<b>Light Life</b>	50,000 Hours Average Life Time																									
<b>Light Construction</b>	Die Cast Aluminium Alloy A360																									
<b>Bracket Construction</b>	Stainless Steel 5.5mm – SS304/SS316																									
<b>LED Driver</b>	<table border="1"> <thead> <tr> <th>Parameter</th> <th>Min</th> <th>Typical</th> <th>Max</th> <th>Unit</th> </tr> </thead> <tbody> <tr> <td>Voltage</td> <td>10</td> <td>24</td> <td>28</td> <td>V</td> </tr> <tr> <td>Power</td> <td></td> <td>60</td> <td></td> <td>W</td> </tr> <tr> <td>Raw Lumens</td> <td></td> <td>7,200</td> <td></td> <td>lm</td> </tr> <tr> <td>Effective Lumens</td> <td></td> <td>6,050</td> <td></td> <td>lm</td> </tr> </tbody> </table>	Parameter	Min	Typical	Max	Unit	Voltage	10	24	28	V	Power		60		W	Raw Lumens		7,200		lm	Effective Lumens		6,050		lm
	Parameter	Min	Typical	Max	Unit																					
	Voltage	10	24	28	V																					
	Power		60		W																					
	Raw Lumens		7,200		lm																					
Effective Lumens		6,050		lm																						
<b>Power Consumption</b>	10 – 28 VDC - < 2.5 Amps																									
<b>Light Protection</b>	Electronic Thermal Management																									
	Reverse Voltage Protection																									
	Under Voltage Shutdown																									
	Transient Voltage Suppression																									
<b>Optics</b>	Spot ± 9.5° Flood ± 12.5°																									
<b>Temperature</b>	Ambient Operating Temperature -50° to +50°																									
<b>IP Rating</b>	IP67, IP68																									
<b>Weight</b>	1.5 kg (3.4 lb)																									
<b>Packaging</b>	17.8 cm x 15.2 cm x 7.6 cm (7 in x 6 in x 3 in)																									



PB-12 Spot lux distribution from a height of 3 m (10 feet) with 17° tilt.



PB-12 Flood lux distribution from a height of 3 m (10 feet) with 30° tilt.

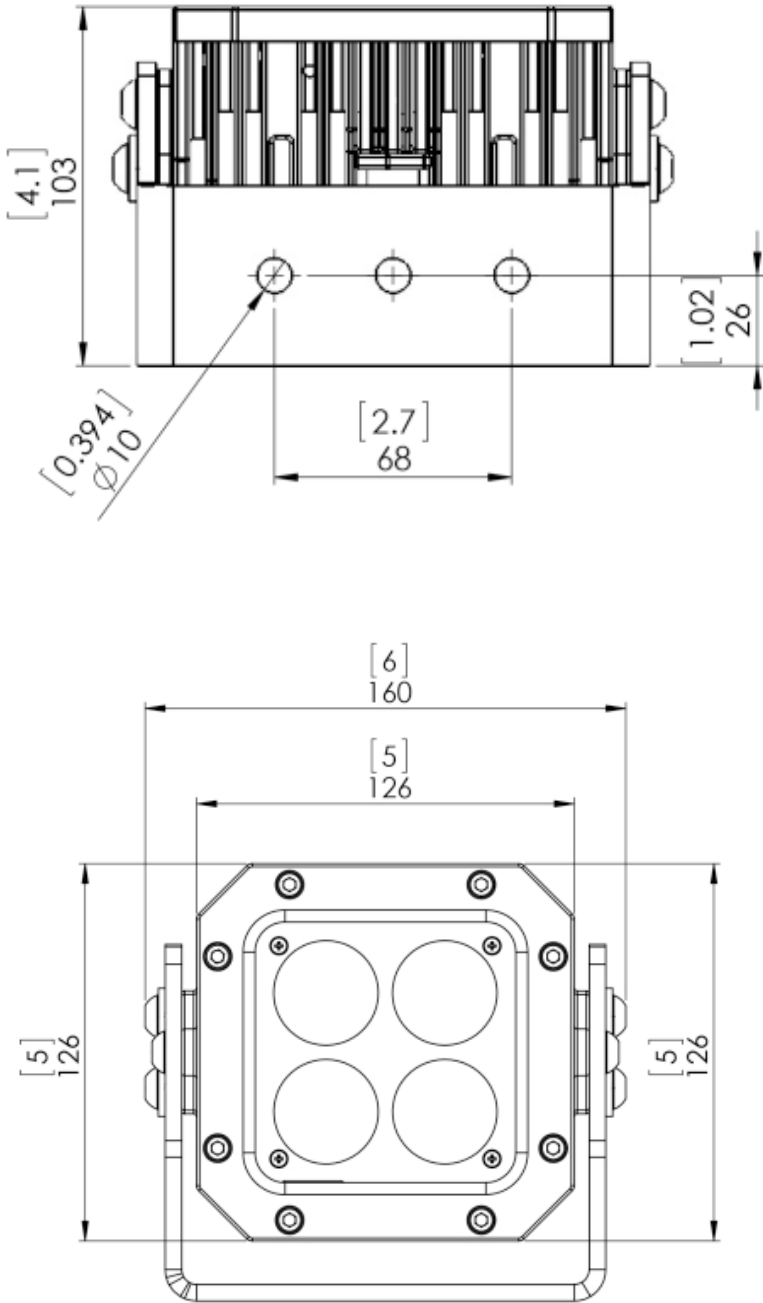


Certificate of Compliance: 70018821

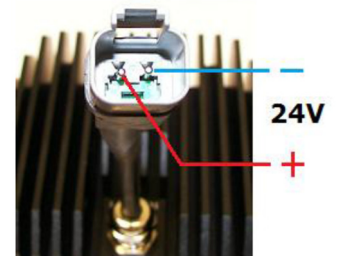
PX-12 is manufactured to the following standards:

- CSA C22.2 No. 250.0-08 – Luminaires
- UL 1598, 3rd Ed. – Luminaires
- CSA C22.2 No. 250.13-14 – Light Emitting Diode (LED) Equipment for Use in Lighting Applications
- UL 8750, 1st Ed. – Light Emitting Diode (LED) Equipment for Use in Lighting Products

**MECHANICAL SPECIFICATIONS**



Pin Configuration



To ensure proper system operation adequate air circulation is required. Limited air circulation internal thermal management system will reduce power consumption which in turn will reduce system light output.

The internal thermal management system is designed to prevent the light from overheating.